

# BUILDING THE FUTURE FOR THE NEXT GENERATION



WITH IN HOUSE-ONE STOP R&D SOLUTION



BATTERY SOLUTION

# BATTERY PACK & BMS

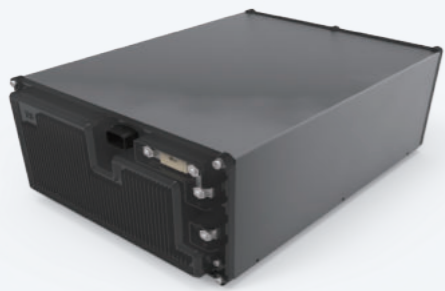
BATTERY SOLUTION FOR AUTOMOTIVE & ESS APPLICATION.

# BATTERY PACK & BMS

배터리 팩 및 배터리 메니지먼트 시스템

BATTERY SOLUTION FOR AUTOMOTIVE & ESS APPLICATION

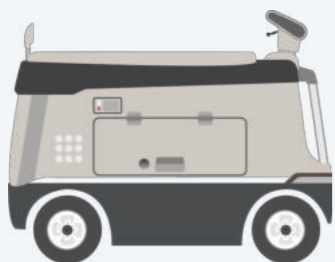
## 중소형 Battery Pack



### 48V용 중형 배터리 팩

- 48V 4kWh / 2kWh
- Compact Design
- IP55 Waterproof Grade
- Over Voltage Protection
- Under Voltage Protection
- Over Temperature Protection
- Under Temperature Protection
- Over Current Protection
- Monitoring : CV, CT, PV, PC, PT
- Calculation : SOC, SOH
- Support CAN Protocol
- Provided Private Viewer

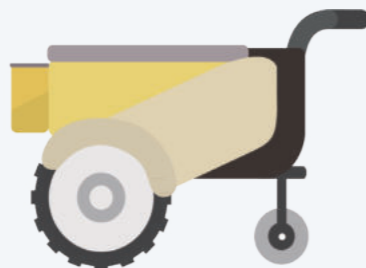
활용예시



### 24V용 소형 배터리 팩

- 24V 1kWh
- IP65 Waterproof Grade
- Over Voltage Protection
- Under Voltage Protection
- Over Temperature Protection
- Under Temperature Protection
- Over Current Protection
- Monitoring : CV, CT, PV, PC, PT
- Calculation : SOC, SOH
- Support CAN Protocol
- Provided Private Viewer

활용예시



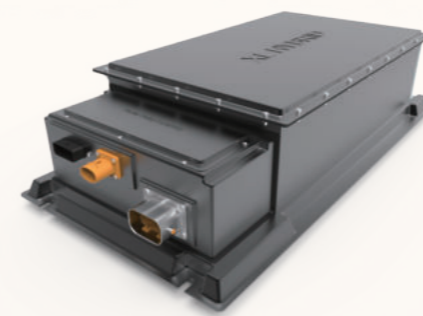
## 차량용 Battery Pack



### 골프 카트, 저속형 자동차용

- 72V 82AH 6kWh
- 48V 6kWh / 4kWh
- Sleep-Auto Wake up Function
- Over Voltage Protection
- Under Voltage Protection
- Over Temperature Protection
- Under Temperature Protection
- Over Current Protection
- Monitoring : CV, CT, PV, PC, PT
- Calculation : SOC, SOH
- Support CAN Protocol
- Provided Private Viewer

활용예시



### HYBRID 자동차용 배터리 팩

- 270V 1.5kWh
- Peltier Cooling Structure
- Master / Slave BMS Design
- Over Voltage Protection
- Under Voltage Protection
- Over Temperature Protection
- Under Temperature Protection
- Over Current Protection
- Monitoring : CV, CT, PV, PC, PT
- Calculation : SOC, SOH
- Support CAN Protocol
- Provided Private Viewer

활용예시



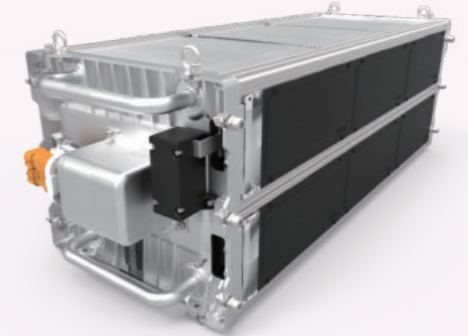
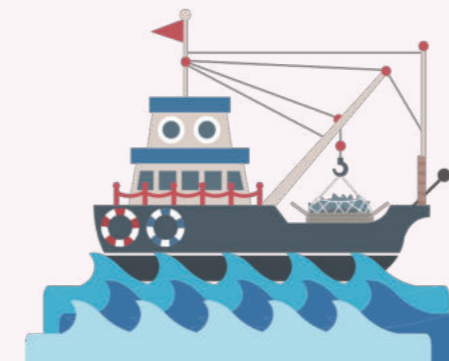
## 기타



### 전기어선, 수상레저용 배터리 팩

- 48V 6kWh
- IP67 Waterproof Grade
- Anti-Salt water, Water Flood Detection
- Over Voltage Protection
- Under Voltage Protection
- Over Temperature Protection
- Under Temperature Protection
- Over Current Protection
- Monitoring : CV, CT, PV, PC, PT
- Calculation : SOC, SOH
- Support CAN Protocol
- Provided Private Viewer

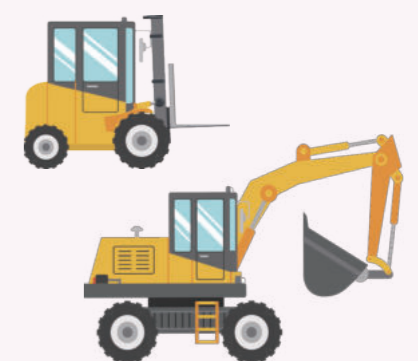
활용예시



### 특수차량용 배터리 팩

- 224V 16kWh
- Emergency Power
- No Engine Required
- Over Voltage Protection
- Under Voltage Protection
- Over Temperature Protection
- Under Temperature Protection
- Over Current Protection
- Monitoring : CV, CT, PV, PC, PT
- Calculation : SOC, SOH
- Support CAN Protocol
- Provided Private Viewer

활용예시



# BMS & Viewer System

## BMS Battery Management System

- 전압, 전류, SOC(잔존용량), 온도 기본 데이터 검출
- 배터리 팩의 과전압, 저전류 등의 시스템 상태에 따라 제어

### 주요기능



전압 / 전류  
모니터링



잔존용량  
계산



온도  
모니터링



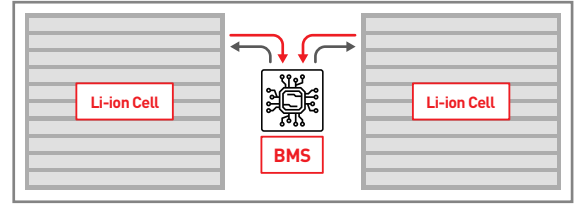
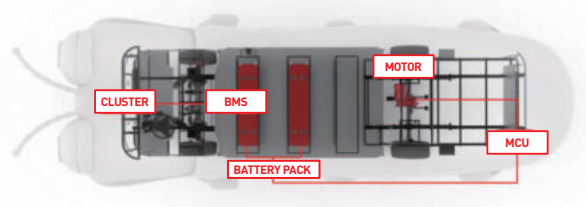
노화수명  
예측



안전예방  
기능 실행



고장진단  
기능 실행



## Viewer System

- 전압, 전류, SOC(잔존용량), 온도 기본 데이터 확인
- 배터리 팩의 과전압, 저전류 등의 시스템 상태 확인

### 주요기능



전압  
표시



전류  
표시



온도  
표시



고장진단  
표시



데이터  
입출력



업데이트



INNOBIZ  
중소기업기술혁신협회



**SJ Head Quarters**

**Customer Center**

371,372 Sanghageori, Woocheonmyeon, Hoengseong-gun, Gangwon-do  
(15073) 237. Sangidaehak-ro, Siheung-si, Gyeonggi-do, Korea  
T. 031.431.9970 (Inquiries)

[www.welcometosj.com](http://www.welcometosj.com)